

HSM Immunisation Requirements	
Contact Person:	Associate Deans: Learning & Teaching / Student Affairs & Service Quality
Status:	Approved
Date of approval:	17 October 2012
Date last amended:	4 July 2023
Date of next review:	4 July 2024
Related policies and documents:	Fit to Practice Hub Support for Students Policy – SS 5.8.2 University Student Charter Student Code of Conduct Policy HSM-related Program Student Charters Bond Covid Safety Principles

1. Overview

For students of Faculty programs with compulsory clinical placements, you will work in environments at risk of exposure to infectious diseases. It will be a requirement of the health facility where you will be completing your placement that you are immunised against vaccine-preventable diseases is required to protect you, your patients/clients, and colleagues. This was outlined in your offer letter along with links to the webpage; [Fit to Practice Hub](#). Students are expected to complete compliance requirements, including vaccinations, as soon as possible. Unless there are reasonable grounds for delay, failure to complete compliance requirements by the semester census date ([Bond University academic calendar](#)) will result in withdrawal from the program (Appendix 1).

You will also receive training in other precautions as part of your program, such as but not limited to hand hygiene and scrubbing, gloving, and gowning, to help minimise the risk of exposure.

2. Definitions

Immunisation: Inducing immunity against infection using antigen to stimulate the body to produce its own antibodies.

Immunity: The condition of being immune. Immunity can be innate, for example, humans are innately immune to canine distemper, or conferred by a previous infection or immunisation. Blood tests are required to help determine levels of immunity.

Vaccination: The process of administering a vaccine to a person to produce immunity against infection. (Vaccination does not guarantee immunity.)

3. Immunisation Requirements

Students on placement are considered healthcare workers and must always **remain current with and provide evidence of** compliance with Australian Immunisation Guidelines, as detailed in the [Australian Immunisation Handbook](#). These guidelines inform [QLD Health policy](#) and [NSW Health Occupational Assessment, Screening and Vaccination Against Specified Infectious Diseases Policy](#) governing clinical practice, including student clinical placement, and have informed the development of the Faculty of Health Sciences & Medicine Immunisation Requirements.

Immunisation requirements for Faculty programs with clinical placements are stipulated in the [Fit to Practice Hub](#) and must be initiated, maintained, and paid for by the student.

4. Immunisation evidence required for student clinical placement in Australia.

Disease	Evidence Required
COVID-19 Vaccine	Two doses of approved COVID-19 vaccines NSW Health mandates three doses of approved COVID-19 vaccines
Diphtheria, Tetanus & Pertussis (Whooping Cough)	One adult dose of dTpa vaccine (Adacel or Boostrix) within the last 10 years (must not expire during placement/your studies)
Hepatitis B	Evidence of a complete age-appropriate course of Hep B vaccinations AND Serology showing Anti-HBs ≥ 10 mIU/mL at the commencement of your studies AND Triennial testing (or as required by a specific placement provider) to confirm ongoing immunity
Measles, Mumps & Rubella (MMR)	2 doses of MMR vaccine at least one month apart OR Serology showing positive IgG for Measles, Mumps and Rubella
Varicella	2 doses of Varicella vaccine at least one month apart OR Serology showing positive IgG for Varicella
Influenza	One dose of current seasonal Influenza vaccine (in Australia) by June 1 each year
HIV & HCV	Testing for HIV & HCV at the commencement of your studies and triennially (or as required by a specific placement provider) thereafter. With each test, you must complete and submit the NSW Health Blood Borne Virus Form .
Tuberculosis	If you were born in or in your lifetime have spent 12 weeks or more in countries considered high-risk for TB and/or have specific symptoms and/or have been exposed to someone with TB, you will be instructed to undertake TB screening in Australia . This will be determined upon receipt of your TB Assessment Tool Attachment 7 a form you are required to complete as part of the compliance process. The fastest way to complete TB screening is to request an Interferon Gamma Release Assay (IGRA) TB QuantiFERON test from your doctor. The test costs around \$80 to \$100, and results should come back within a week or two. Not all pathology collection centres can perform the test, as special blood vials are required, so it is a good idea to call your nearest centre first to check.

5. Additional vaccination requirements

Please be aware that in certain specialised clinical settings and in some health facilities there may be additional vaccinations or other evidence of protection required to ensure that the risk to vulnerable patients is minimised. This can occur at any stage throughout your program. You will be advised if compliance requirements change or if additional vaccinations or evidence are required for your placement.

6. Vaccine non-response, contraindications, or reactions

A small percentage of the population does not respond to some vaccines. If your serology shows that you haven't responded to an initial course of vaccination (e.g., for Hepatitis B: HBsAb <10 mIU/mL), you may be required to have another course before being classified as a "non-responder".

In the event of non-response, contraindications, or a severe/allergic reaction to a vaccine, you should consult with an infectious disease physician to discuss risks and options prior to undertaking clinical/professional practice placements. You should also seek the advice of your doctor to clarify any vaccine issues you may have.

7. Conscientious objection to vaccinations hesitancy

While some health practitioners may have a conscientious objection to immunisation, all practitioners, including students on placement, must comply with local employer, health service or health department policies, procedures and guidelines relating to immunisation.

Any queries about these should be directed towards the individual employer, health service, state or territory health department and/or education provider for registered students.

All reasonable effort will be made to find you suitable placements. However, placements can't be guaranteed if you are not fully protected, and this may affect your ability to progress in your program.

8. Procedure for providing immunisation evidence.

All Fit to Practice tasks compliance for clinical placement, including required immunisation requirements, is managed through Osler a clinical governance platform. Your Osler account can be activated in Orientation Week, at which time you are required to submit your immunisation evidence (official medical records) by the close of Orientation Week deadline. For complete instructions, please visit the [Fit to Practice Hub](#).

9. Students living with a blood borne virus (BBV) who perform exposure prone procedures (EPPs)

This section refers to students affected by Hepatitis B (HBV), Hepatitis C (HCV) or Human Immunodeficiency Virus (HIV).

Principles of medical ethics and professionalism are foundational to the following:

- The rights of all patients to good standards of practice and care from health care workers and students.
- That students owe a duty of care to patients and are responsible for protecting patients against infection.
- The Queensland Anti-Discrimination Act 1991 prohibits discrimination based on impairment (including the presence of blood borne virus).
- Students who are infected are entitled to confidentiality as afforded to any other patient, however in exceptional circumstances their name may be disclosed in the interest of patient protection.

What are exposure prone procedures (EPPs)?

As defined by the Communicable Diseases Network Australia, “EPPs are procedures where there is a risk of injury to the healthcare worker resulting in exposure of the patient’s open tissues to the blood of the healthcare worker. These procedures include those where the healthcare worker’s hands, even when gloved, may be in contact with sharp instruments, needle tips or sharp tissues (spicules of bone or teeth) inside a patient’s open body cavity, wound or confined anatomical space where the hands or fingertips may not be completely visible at all times.” More information on which procedures are exposure prone can be found in the [Guidance on classification of exposure prone and non-exposure prone procedures in Australia 2017](#).

Complying with Australian National Guidelines

As stipulated by the [Australian National Guidelines for the Management of Healthcare Workers Living With Blood Borne Viruses And Healthcare Workers Who Perform Exposure Prone Procedures At Risk Of Exposure To Blood Borne Viruses](#), healthcare workers (including students attending clinical placement) must:

- Be under the ongoing care of a treating doctor with relevant expertise (e.g. an infectious disease physician)
- Comply with prescribed treatment.
- Have ongoing viral load monitoring at the appointed times.
- Not perform EPPs if viral load or viral clearance criteria are not met (see detailed information in the guidelines according to the specific BBV)
- Seek advice regarding any change in health condition that may affect their fitness to practise or impair their health.
- Release monitoring information to the treating doctor
- If required, release de-identified information to the relevant area of the jurisdictional health department/expert advisory committee.
- if required, release health monitoring information to a designated person in their workplace in the event of a potential exposure incident to assess the requirement for further public health action.

For more information, please refer to the [Australian National Guidelines for the Management of Healthcare Workers Living With Blood Borne Viruses And Healthcare Workers Who Perform Exposure Prone Procedures At Risk Of Exposure To Blood Borne Viruses](#).

10. Related Procedures

- Bond University [Support for Students Policy SS 5.8.2](#)
- Bond University [Student Code of Conduct Policy SS 5.2.1](#)
- HSM - [Pregnancy and Your Studies Guidelines](#)

11. Related Guidelines & Forms

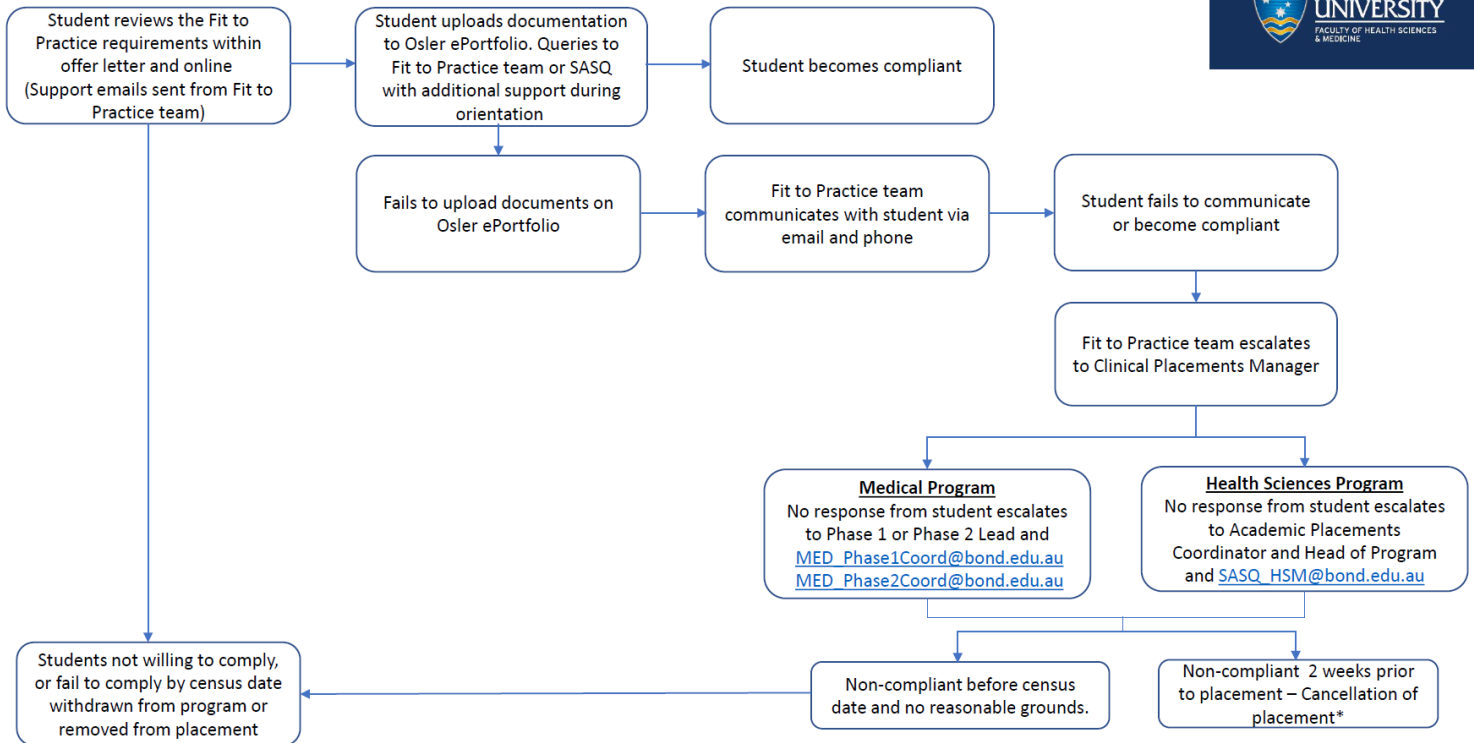
For complete instructions and all relevant forms, please visit the [Fit to Practice Hub](#).

Appendix 1

Fit to Practice flowchart.

Faculty of Health Sciences and Medicine Fit to Practice

Process of managing communication when escalating concerns regarding non-compliant students.



*Refer to relevant programs' Rules of Assessment and Progression